

ARBESCO DT™

a superior text typeface family for books, newspapers and magazines.

A NEW FAMILY OF FONTS IN OPENTYPE® FORMAT.

ARBESCODT™

a superior text typeface family for books, newspapers and magazines.

© 2008 DTP Types Limited. All right reserved.

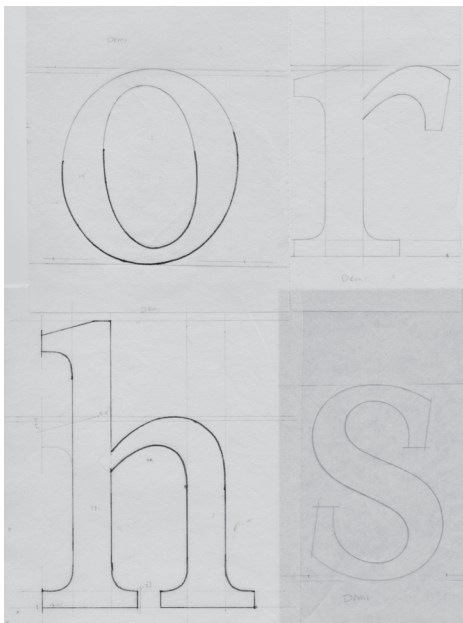
DTP TYPES LIMITED

Developers of High Quality Font Software

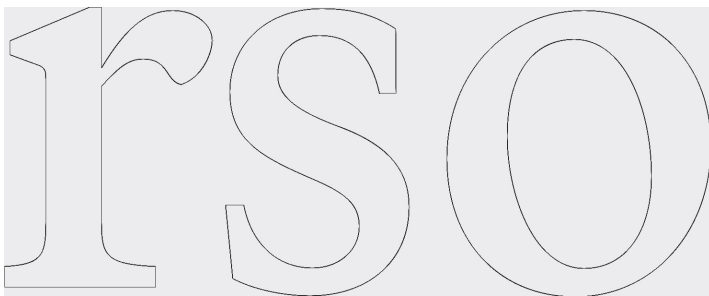
[HTTP://WWW.DTPTYPES.COM](http://www.dtptypes.com)

Development

The planning drawings for Arbesco had been hidden in a old desk drawer since 1984, and only came to light when some ruthless clearing was being undertaken. “*I didn’t remember too much about the original development work for the family.*” says Malcolm Wooden, creative designer and director at DTP Types Limited. “*I only remember that it was an exercise in developing a new phototypesetting design. But after re-evaluating the drawings, I felt that there was something that could be salvaged for modern digital use.*”



Some of the original 1984 drawings.



Some of the re-worked glyphs.

The design was in need of a significant overhaul. It looked very mechanical and lacked detail mainly due to the constraints of film based typesetting at the time. “*I think a lot of designers, if asked to look again at past work, would re-work their designs, The design is a snapshot of what you are and what you know at that time – we all move on.*”

All the existing drawings were scanned and nearly all the refinements to the original design were made directly on screen. “*Some sketches were made of design features that needed careful attention, such as the terminal designs and the angle of the joining arch of the h, n, m, etc.*”

As the full design emerged, and the initial trial settings were assessed, it was clear that this typeface design could

be a very useful addition to the font library. The design had all the characteristics of a fine yet robust text typeface. A range of weights had been planned in 1984, but these plans were also reassessed. A new ten weight font family was planned with the possibility of more variations to follow.

Summer Trifle Serves 6

First of all cut the trifle sponges in half lengthways, spread each half with raspberry jam, then reform them and cut each one into 3 little sandwiches. Now arrange them in the trifle bowl. Then make a few stabs in the sponges and sprinkle the Madeira or sherry carefully and evenly over them, then leave it all aside for half an hour so it can soak in.



After that sprinkle half the raspberries over the top of the trifle sponges pushing some down in amongst them. Then put the rest into a food processor along with the sugar and whiz to a purée, then push the purée through a nylon sieve to remove the pips. Next drizzle the purée over the raspberries.

Now empty the mascarpone into a bowl, give it a whisk to soften it, then add the custard, a little at a time, whisking them together till thoroughly blended. Spoon the mixture evenly over the top of the raspberries. Sprinkle with toasted flaked almonds, cover with clingfilm and chill before serving.

Ingredients

5 trifle sponges

2 rounded tablespoons raspberry jam

4 fl oz (120 ml) Madeira or sherry

12 oz (350 g) fresh raspberries

$\frac{1}{2}$ level tablespoon golden caster sugar

250 g tub mascarpone

500 ml tub fresh ready-made custard

1 tablespoon toasted flaked almonds

You will also need a 1 $\frac{3}{4}$ litre trifle bowl.

The Glyph Set and Features

Glyph set codepage coverage

1252 Latin1:West European
 1250 Latin2:East European
 1254 Turkish
 1257 Baltic
 MacRoman
 MacCentralEuropean
 MacRomanian
 MacTurkish

OpenType feature set

Class based kerning
 Fractions
 Ligatures
 Proportionally spaced figures
 Oldstyle figures
 Superior figures
 Inferior figures
 Numerator and denominator figures for horizontal bar fractions

The basic glyph set of DTP Types OpenType fonts is now well established, with well over 200 fonts from the font library on the market in OpenType format. Full glyph set specifications are available via www.dtptypes.com

Making Complex Nut Fractions*

Arbesco has a group of glyphs that have been designed to work together to create horizontal or nut (en) fractions. Creating simple single column nut fractions is easy with the Fraction feature, just set something like

123-4

Now define the 3-4 as a fraction using the OpenType features from the application and get

12³/₄

But you can also achieve complex fractions like **12³⁴⁵/₁₀₂₄**

This is created with the help of a few extra glyphs accessible from the applications glyph palette.

Step 1 - Set the full size figures and top row of the fraction

12345

Step 2 - Select 345 and change them using OpenType numerators feature

12³⁴⁵

Step 3 - To balance the three numerators over the four denominators you need to add some packing space. From

the glyph palette find glyphs EE44 and EE45. Use EE45 at the front and back of the numerator figures.

12³⁴⁵

Step 4 - Add the four figure fraction bar (EE43) and the 1024 figures, then change the 1024 figures to denominators.

12³⁴⁵/₁₀₂₄

**Not all applications will be able to construct nut fractions.*

The Wine List

Vintage 75cl Bottle

CHAMPAGNE

<i>Bollinger Grande Année</i> <i>Very Dry Full Bodied</i>	1997	£110.00
<i>Krug Grande Cuvée</i> <i>Beautiful Bouquet Elegant and Exquisite</i>	n/v	£125.00

WHITE WINE

<i>Chateauneuf-du-Pape Blanc Domaine Pierre Usseglio</i> <i>France</i>	2003	£48.95
<i>Chablis 1er Cru William Fevre "Mont de Milieu"</i> <i>Burgundy</i>	2004	£48.95
<i>Chassagne Montrachet 1er Cru Girardin "La Romanee"</i> <i>Burgundy</i>	2005	£80.95

RED WINE

<i>Domaine Louis Latour Beaune 1er Cru Pinot Noir</i> <i>Burgundy</i>	2002	£52.95
<i>Chateau Beychevelle 4er Cru Classe St Julien</i> <i>Bordeaux</i>	2003	£86.00
<i>Nuits St Georges 1er Cru Clos St Marc Bouchard Pere et Fils</i> <i>Burgundy</i>	2000	£96.00

Arbesco — The Text Face

During the development of Arbesco it was quickly realised that this was an excellent chance to create a high quality text design for use in OpenType font format. Work was focused on creating the base size reference at 10 point (*which is used for the main text here*) and to optimise the colour, texture, and readability of continuous text in all the different weights.

Features such as the larger ink-traps and thinning of converging strokes helped to eliminate some of the problems of type at this size – particularly in the italic styles. An unusual terminal end to some of the glyphs was devised to eliminate troublesome ‘spotting’ or ‘rivers’ that can happen when many terminal end glyphs group together.

Arbesco works extremely well in a size range of 8 - 12 point in all the available weights of the design. The *Book & Regular* fonts also come with true designed SMALL CAPITALS.



Detail of terminal and ink-trap.

Book 10pt

Lorem ipsum dolor sit amet elit.

LOREM IPSUM DOLOR SIT AMET ELIT.

Vestibulum lectus augue varius.

Regular 10pt

Lorem ipsum dolor sit amet elit.

LOREM IPSUM DOLOR SIT AMET ELIT.

Vestibulum lectus augue varius.

SemiBold 10pt

Lorem ipsum dolor sit amet elit.

Vestibulum lectus augue varius.

Bold 10pt

Lorem ipsum dolor sit amet elit.

Vestibulum lectus augue varius.

ExtraBold 10pt

Lorem ipsum dolor sit amet elit.

Vestibulum lectus augue varius.

Acknowledgments

ArbescoDT is a trademark of DTP Types Limited.

OpenTypes is a registered trademark of Microsoft Corporation in the USA and other countries.

This brochure is © 2008 DTP Types Limited. All rights reserved.